

Welcome to our Academy



Redhill was the first secondary school in Nottinghamshire to be awarded an “outstanding” Ofsted rating for the quality of its teaching, a distinction we have been awarded three times in succession.

Thank you for showing an interest in The Redhill Academy. It is an absolute privilege to write to you as Headteacher of this wonderful school.

The Redhill Academy is a place firmly rooted in high expectations, inclusivity and genuine care for all members of our school community. At Redhill we place a high priority on school culture and a sense of belonging. We call this ‘The Redhill Way’ and we incorporate it into everything that we do. The Redhill Way consists of the following:

1. **Work Hard.** We expect every member of our school community to have the highest aspirations in all that they do. We encourage students to act on feedback and be resilient with highly challenging learning. Being successful does not happen without hard work. We must try our best in all subjects, all the time. This will lead to students learning from expert teachers; they will make fantastic progress; and they will be rewarded for their efforts. At Redhill we continually celebrate the success of our students.



2. **Embrace opportunities.** For all our students, whatever their skills or ambitions, the opportunities we provide are enriching and empowering. The range of subjects on offer to students is a strong feature of the academy and plays an important part in helping students achieve exceptionally well. From challenge and inspiration in the classroom to a vast array of co-curricular activities, there is a considerable breadth of possibilities and leadership opportunities available to our students, contributing to the rounded individuals they become.

3. **Be respectful;** of yourself, others and the environment. We have a diverse school community based on equality and a sense of personal responsibility. We encourage students to take an active role in their education and our students make excellent contributions to their own learning, taking pride in their work and in their academy.

The future of The Redhill Academy and its staff and students is an exciting one. We are delighted that our parents are part of this unique learning community. I hope our website and prospectus will give you an authentic sense of what we stand for and strive to achieve, and I look forward to working with you and your children.

Mike Hardy,
Headteacher

Redhill Academy provides an exceptional education for its pupils. The school's core principles underpin a firmly embedded culture of aspiration and inclusion- Ofsted



OUR ETHOS

As an Academy with specialisms in both the Performing Arts and Sciences, we cultivate our teaching and learning within an academic and creative environment that aims to inspire and enthuse our students.

Your child's learning and development is our most important goal; providing them with an education that will give them the best possible opportunities throughout their life.

By offering each student a wide range of education pathways, academic and vocational options, and exciting extra-curricular activities, we accommodate our students' varied talents and aspirations. This demands the provision of high-quality teaching and opportunities.

Through continually improving our teaching and learning strategies and simultaneously developing our students' independent learning skills, we guide young people on their journey to further and higher education or skilled employment. Our active encouragement of independent thinking, self-reliance and social responsibility helps students grow in confidence and take responsibility for their development as rounded individuals.



CORE PRINCIPLES

Our goal is to ensure that all children, whatever their background and starting points, are given the opportunity to achieve their full potential, both in terms of academic achievement and character development.

We value teamwork, honesty, transparency and industry in helping to achieve our core purpose of 'Equality and Achievement'.

Our academy provides an environment in which high expectations are the norm. We encourage our students to be the best they can be. We are determined to support all students in achieving their true potential, whatever their background or starting points.



1

We promote

high expectations







We built our school community based on equality and a sense of personal responsibility. Every student and member of staff at Redhill has an equal right to be successful and all members of our community are treated equally, fairly and with respect.

We have always aimed to promote excellent academic standards as well as superb sport and other extra-curricular provisions alongside pastoral care.

Educating the students at Redhill, and ourselves, on what we can do to promote equality, diversity and inclusion is a significant aspect of our work together. We hope that all students who attend Redhill will also understand that their impact on the lives of others is crucial to everyone's wellbeing and success.

We uphold
2 equality & diversity

We believe that all students should have the support and encouragement needed to achieve their true potential. They should leave school with the formal qualifications they need to pursue their dreams.

Our goal is to equip students with the skills and confidence they need to reach their full potential. We want them to be passionate about their learning and creative in their thinking.

Students will experience a broad and balanced curriculum during their five years at Redhill Academy, which exposes them to the finest examples of humanities speakers, thinkers, and creators, showcasing outstanding accomplishments from across the globe. With our specialism in the Performing Arts, we also emphasise art, dance, drama, and music, with many students studying these subjects at GCSE and beyond.



3 We celebrate academic
achievement

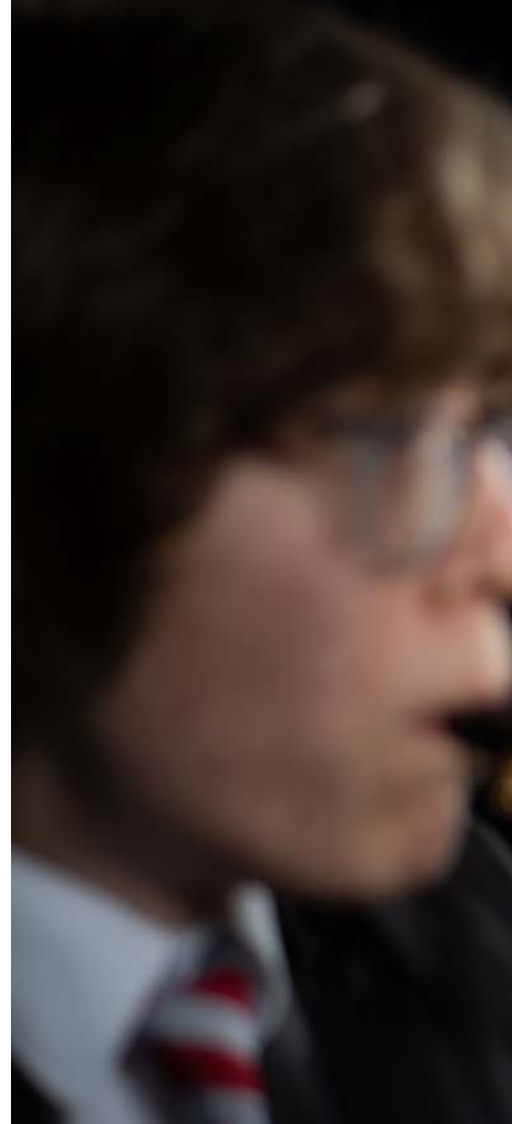


1. Ich bin ein Student.
2. Ich bin ein Lehrer.
3. Ich bin ein Arzt.
4. Ich bin ein Ingenieur.
5. Ich bin ein Künstler.
6. Ich bin ein Wissenschaftler.
7. Ich bin ein Journalist.
8. Ich bin ein Politiker.
9. Ich bin ein Unternehmer.
10. Ich bin ein Sportler.
11. Ich bin ein Musiker.
12. Ich bin ein Schauspieler.
13. Ich bin ein Forscher.
14. Ich bin ein Erfinder.
15. Ich bin ein Erfinder.

We promote activities that build our students' resilience, respect for staff and self-confidence. These include participation in sport, the performing arts, trips abroad, cultural experiences and character-building challenges. Our 'Pledge' system ensures that every student benefits from these important opportunities.


To further develop this ethos and raise expectations around the importance of engagement from everyone, the Pledge themes are displayed throughout the academy, and staff dedicate time to focus on helping students identify opportunities to achieve their Pledges and the importance of doing so.

4 We widen students' experiences









Excellent teaching is the bedrock of an effective school. We invest in the professional development of our teachers as a priority. We believe in sharing best practice through networks, coaching and conferences. As part of the Redhill Academy Trust we cater for teachers from their first year through to executive

Our Academy has a strong tradition of nurturing talent and encouraging academic achievement. Combine this with excellent care and inspirational teachers who plan lessons that engage and challenge students in a culture where curiosity and high aspirations are encouraged, it is no surprise that Redhill has a unique atmosphere where confidence thrives, and anything seems possible.

5 We consistently deliver
outstanding teaching

OUR CURRICULUM

Education is about much more than examination results. At Redhill, we encourage a love of learning in our students, broadening their horizons and inspiring a sense of wonder about the world around them. We aim to provide a curriculum that enables all students to enjoy and achieve during their time with us.

Our students study a rich and exciting curriculum during their first three years. Our curriculum introduces 'big ideas', stimulates debate and lays the foundations for good work habits.

Years 7 to 9

During the first three years of their learning journey, all students are taught a broad and balanced curriculum which consists of the following each week:

- Art

- Computing

- Dance

- Design and Technology

- Drama

- English

- French/German

- Geography

- History

- Mathematics

- Music

- Personal Social and Health Education

- Philosophy, Religion and Ethics

- Physical Education

- Science

Year 10 & 11: The Examination Years

It is essential to maintain students' academic range at GCSE, providing scope for the development of knowledge and understanding across a wide range of subjects.

We offer a broad range of academic qualifications. We aim for these courses to stretch and challenge our students, deepening their understanding and providing them with the resources they need to succeed in a competitive labour market.

During these years all students continue to study:

-
- English (including English Literature)

 - Mathematics

 - Science

-
- Philosophy, Religion and Ethics

 - Physical Education

 - At least one additional EBacc subject

Optional Subjects

-
- Art (GCSE)

 - Business Studies (GCSE)

 - Computer Science (GCSE)

 - Dance (GCSE)

 - Design & Technology (GCSE)

 - Drama (GCSE)

 - Food Preparation & Nutrition (GCSE)

 - French (GCSE)

-
- Geography (GCSE)

 - German (GCSE)

 - Health & Social Care (BTEC)

 - History (GCSE)

 - Music (GCSE)

 - Physical Education (GCSE)

 - Religious Studies (GCSE)

 - Triple Science (GCSE)



CO-CURRICULAR

Our co-curricular offer is vibrant and diverse, complementing the lively academic life of Redhill Academy. Our 'Curriculum Plus' programme provides opportunities for students to further develop the interests and skills sparked by our academic curriculum.

From History Club to Duke of Edinburgh, music practice to Diversity Ambassadors, there really is something to captivate everyone. All students are expected to get involved as part of their personal development.



Scan the QR code
for more information.



HIGH STANDARDS

As an outstanding Academy, we take great pride in the appearance and behaviour of our students and welcome the cooperation of parents in this matter. We ask that all those in our community work together to maintain these standards.

Code of Conduct

We are committed to high standards in all we do and expect all students to show respect for staff, each other and themselves. In practice, this means:

- Developing empathy and trying to see other points of view
- Communicating calmly and clearly
- Helping to keep the classroom environment a place for positive learning
- Helping to make the school a pleasant environment
- Moving about sensibly and co-operatively
- Remembering that they represent the school whenever in uniform
- Completing all work to the best of their ability
- Not lowering their standards

Uniform

• Black Blazer (crested)	• White button collar shirt
• Black trousers (crested)	• Plain black or grey socks
• Black skirt (crested)	• Black tights or ankle socks
• School jumper (crested)	• Plain black leather shoes (no boots/trainers)
• Tie (in school colours)	• Plain colour school coat*

*We do not permit denim, leather or sports jackets, body-warmers or hoodies.

Further information on our uniform policy can be found in your Academy induction pack and online.

The academic curriculum is very well supported by an extremely broad enrichment and co-curricular programme. There are many opportunities for pupils to pursue their talents and interests

- Ofsted





ADMISSIONS POLICY

Where the number of applications for admission exceeds the number of places available, we will apply the following criteria, in the order set out below, to decide which children to admit:

1. Looked after children and children who have previously been looked after.
2. Up to 10% of places will be allocated to students who, at the closing date for applications, can show an aptitude for the Performing Arts, and whose parents have requested a place at the school. Places will be allocated on the basis of those achieving the highest scores following the completion of the workshop process, as published in the school's prospectus.
3. Children who, at the closing date for applications, have a sibling attending the school and do live in the catchment area.
4. Other children who live in the catchment area at the closing date for applications.
5. Children who, at the closing date for applications, have a sibling attending the school and do not live in the catchment area.
6. Children who live outside the catchment area but who on 31 October preceding admission attend the Redhill Family of Schools (Arnold Mill Primary, Killisick Junior, Richard Bonington Primary, Robert Mellors Primary, Burntstump Seely Church C of E Primary Academy).
7. Other children who live outside the catchment area.

Over-subscription (except criterion 2)

Preference will be given to children who live nearest to the school 'as the crow flies'. Distances are measured from the entrance to the child's home to the principal entrance to the main administrative building of the school by the Local Authority which currently uses a computerised measuring system.

Further guidance on admissions can be found on our website.